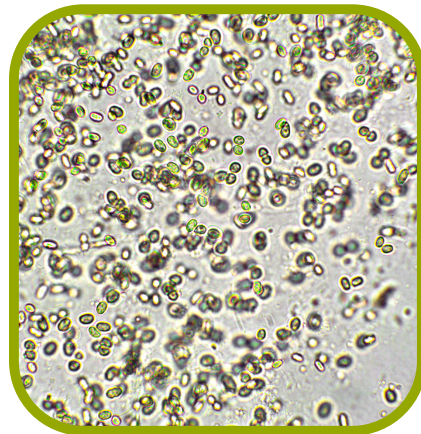




EnSoil Algae Mixing Guidelines

EnSoil Algae bottles contain living colonies of *Chlorella vulgaris* concentrate in water. EnSoil Algae should not be mixed and stored with any other products for more than 24 hours.

The cell wall of chlorophytes such as *Chlorella vulgaris* feature pyrenoids, a central proteinaceous body surrounded by a starch sheath. The inner layer of the cell wall is cellulose. The outer layer is pectose, a feature that makes the cell wall hard to break down and provides a higher plasticity and survivability than other phytoplankton species. **The fortitude of the cell wall enables EnSoil Algae to be mixed with a number of common agriculture inputs *at the time of application*.**



The recommended best practice for application is to apply EnSoil Algae by itself. However, it is completely acceptable to mix EnSoil Algae in a tank with other inputs *at the time of application*.

It is important to note, the following guidance is for mixing *at the time of application*. EnSoil Algae should not be stored in a tank with other products for more than 24 hours before application. The negative consequences described in this document are possible after extended time in a tank, but they will not occur within the first few hours of tank mixing.

Consider the following when mixing EnSoil Algae with other products:

EnSoil Algae may be mixed with fertilizers, however:

- Use Caution: pH of fertilizer is a critical factor. Ideal compatibility with EnSoil Algae is 7 to 9, but ideally around 8.
- High concentrations of some trace metals will have a negative impact specifically anything with copper, chlorides, or sulfates.
- High levels of $\text{NH}_3/4$ will promote bacterial growth and cause them to outcompete our algae if stored/mixed longer than 72 hours.



EnSoil Algae Mixing Guidelines

Mixing with other biotics: EnSoil Algae's live cells over time may compete with other biotics for food, light, etc. Long term storage after mixing with a biotic will compromise algae cell count levels, but mixing just prior to application will not have an effect.

Mixing with Herbicides: Long term storage after mixing will compromise cell count levels, but mixing just prior to application will not have an effect.

Mixing with Fungicide: This will depend on the fungicide's active ingredient. Please consult with us on the specifics as some fungicides could use compounds that have an adverse effect on algae cell counts. Long term storage after mixing will compromise cell count levels, but mixing just prior to application will not have an effect.

Mixing with Pesticides: Long term storage after mixing will compromise cell count levels, but mixing just prior to application will not have an effect.

We do not recommend:

- **Mixing Ensoil with chitosan or bio-active liquid fertilizer from fish, shrimp and crab.** Mixing has shown to create a reaction that will not allow for combined application.
- **Storing EnSoil that has been mixed with another product for more than 24 hours.**



Still have questions about mixing
EnSoil Algae with other products?

Contact:

Tucker Garrigan
Partner Development & Sales
tucker@enlightenedsoil.com
843-532-3875